

COMPANY PROFILE
&
PRE-QUALIFICATION
DOCUMENT



HIGH OPE CONTRACTING L.L.C



هاي جيرمن باور للمقاولات الكهربائية والصحية ذ.م.م

HIGH GERMAN POWER ELECTROMECHANICAL CONTRACTING L.L.C

This document contains all the required information of the company “ HIGH GERMANPOWER ELECTROMECHANICAL CONTRACTING L.L.C



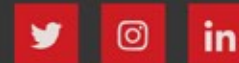
Suspended Ceiling



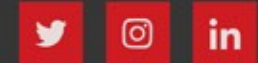
Security



Break_ins



Cas and Heating



A
B
O
U
T



” along with the prequalification document ”

M.D'S



Message

I would like to take this opportunity to express gratitude to all our clients and business partners for their continued support and contributions to the achievement of High German Electrical and Mechanical Works through the years. We ensure the sky-scraping quality in our MEP Projects and other services. Moving further in the competitive market of the UAE, we promise to maintain our continued quality services with highly sophisticated technology to maintain a long terms business relationship. With the gradual development in the market, there are many changes in our organization to improve and maintain Manage also known to be Business-Hub of Middle East and we would contribute our products and services with great motivation and dedication. Moreover, I would also like to emphasize that Challenge Electromechanical Works will continue to invest in enhancing the heights of Project Management, Design, Engineering, Procurement , Operational Level Agreement and maintain the high level of satisfaction of our clients, who we value as the most important assets of our business. On behalf of High German Electrical and Mechanical Works I wish you all a great prosperous year ahead.

OUR SERVICES



The Company has been established with the basic objective of rendering quality products and services in the field of:



1-Maintenance Contracts



2-MEP Contracts (Electrical, Plumbing, Mechanical)

R
S
E
R
V
I
C
E
S

Annual Maintenance Contracts

Our Company H.G.P is a company built from a vast array of experience. We can provide full service and maintenance programs tailored to your requirements, which can range from “care” maintenance of an empty building through to a resident engineer on a large office or commercial complex. We are able to maintain all building services equipment utilizing either our directly employed labour force, or specialist sub contractors who meet our requirements, both in terms of Quality Assurance and Health and Safety. Mill mount is providing a quality service at competitive prices, together with the recognition of client’s requirements and provision of cost effective solutions and high level service delivery. It is able to offer the personal service which, even in these modern times, is still highly valued by many customers. With the necessary procedures in place this will confirm that we are capable of providing bespoke services to the highest level and to the complete satisfaction of our clients.



HIGH GPE CONTRACTING L.L.C



CONTRACT



Building Services Maintenance

- ➤ Lifts
- ➤ Escalators
- ➤ Energy Management
- ➤ Building & Fabric Maintenance
- ➤ Planned Preventative
- ➤ Response Maintenance Helpdesk
- ➤ Maintenance programmers

Consultancy services at the commencement of every new contract, we carry out an in-depth maintenance survey of the equipment and plant within your premises. This knowledge informs our maintenance solution for your business. All of our services can be provided under a Planned Preventative Maintenance programmed, specifically designed to ensure continuity of service of your critical systems, or under a response maintenance package operated through our helpdesk to a service level agreement. Risk assessments of the building or specific areas within the building can be carried out, if required, at this stage in order to comply with relevant regulations and standards.

Electrical Maintenance

- ➤ Power supply
- ➤ Lighting systems
- ➤ Generators & UPS systems
- ➤ Air Conditioning Systems
- ➤ Portable Appliance Testing
- ➤ Access control systems
- ➤ CCTV
- ➤ Fire & Security Alarms
- ➤ Thermal Imaging



Electrical and security systems are subject to ever-increasing design complexity and regulation. At Mill mount Maintenance we believe in investing in on-going training programmers to ensure on-site engineers continuously gain experience and technical capacity

Mechanical Maintenance

- ➤ **Boiler Maintenance**
- ➤ **Air handling units**
- ➤ **Clarifiers**
- ➤ **Chillers**
- ➤ **Pumps**
- ➤ **Water Treatment**

The maintenance of mechanical and water systems has health and safety implications. Professionally managed water analysis and treatment programmes, designed to protect building occupants from potential legionella or microbiological risk are therefore



M
e
c
h
a
n
i
c
a
l

M
a
i
n
t
e
n
a
n
c
e



Maintenance Reporting

Service Maintenance history reporting is carried out through Mill mount's Notification Service. Reports cover the status of ongoing or completed maintenance activity in real time by email or by fax if required.



Call Out Service

Operating to pre-agreed response times, dedicated technicians are dispatched to restore critical mechanical and electrical systems to normal operation.

Customer Help Desk

The helpdesk monitors and logs all reported faults and service related enquiries. Requests are handled promptly and professionally, often in line with Service Level Agreements and waiting time is constantly monitored and improved

Standard Maintenance

Package providing a good quality preventative maintenance solution, this single and transparent contract ensures that your specified equipment/installations are maintained. Works over and above the contract

are billed separately. Under this package clients have access to our Call-Out

Service, Service Repairs and many other services.

- " along with the prequalification document "



Comprehensive Maintenance

Package Maintenance services in according with Service Level Agreement
And Planned Preventative Maintenance programmed.
Real-time information
on maintenance work is provided and preferential response times for emergency call-outs



Company Structure

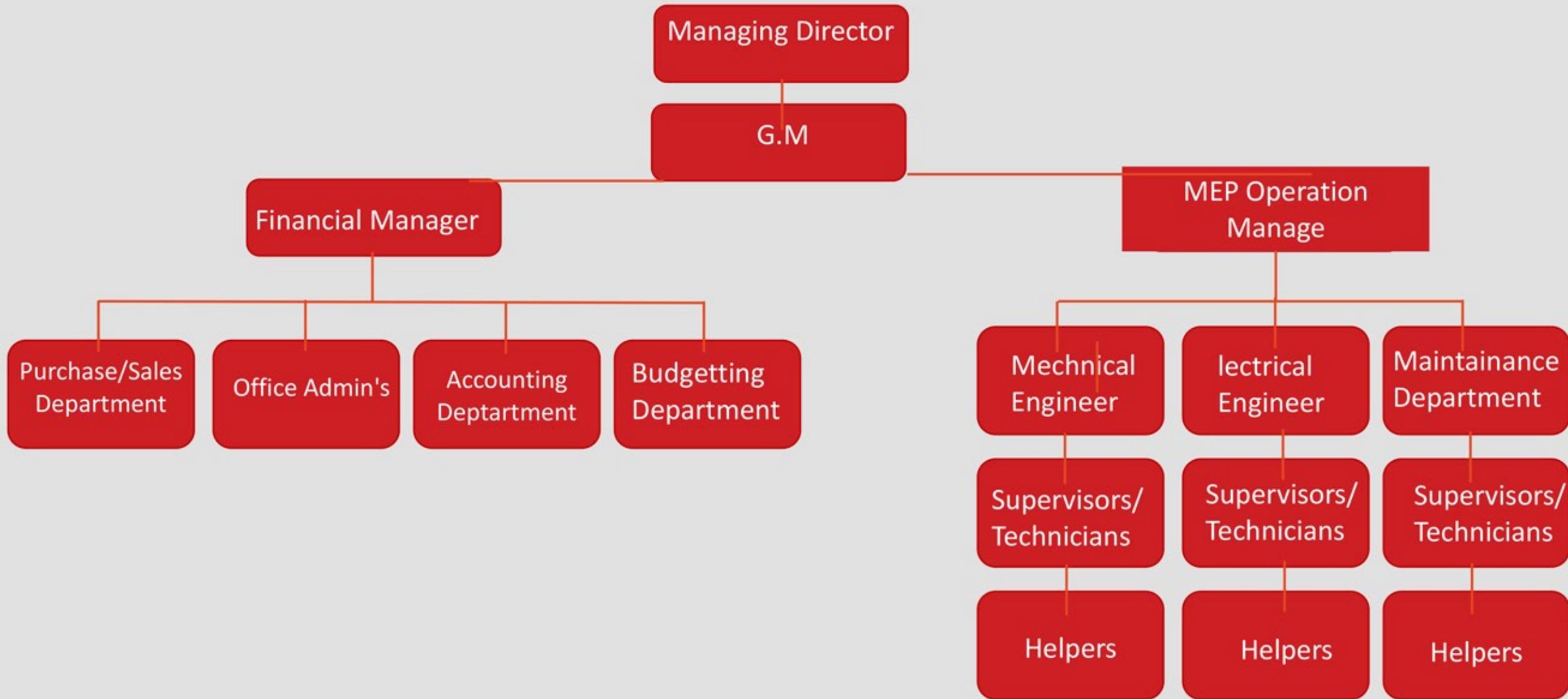
Organization
Chart

Directors

General Manager

Experience

ORGANIZATIONAL CHART



Company Experience

Over 8 years experience providing contracting services in Ireland and providing full maintenance service including 24 hour on-call and minor/mid size refurbishments/builds. Also we have worked within the Health Services, especially within Acute Care. We are familiar with the NDSC especially in regards to Aspergillosis control requirements within acute care

1. Electrical works both maintenance and new projects.
2. Design and build CCTV systems
3. Computerized proximity access control.
4. Knowledge of Medical Gasses wiring/signaling
5. Nurse Call Systems
6. Baby Tagging.
7. IT Networking.
8. Generators/Transformers.
9. Air Conditioning.
10. Process Control.
11. Installation of Clean Rooms in the Pharmaceutical Industry. Motor Control, VLT's etc.
12. Provision of 17 En suite call rooms including common facilities for HSE.
13. Provision of suite of Administration offices for HSE.
14. Provision of Private Consulting Facilities for HSE.
15. Upgrade of Patient wash room and toilet facilities for HSE.

R
S
E
R
V
I
C
E
S

2/MEP Electrical, Plumbing, Mechanical INDEX

1. INTRODUCTION
2. ORGANIZATION CHART
3. HISTORY
4. SERVICES
5. SELECTED PROJECTS REFERENCES
6. CONTACT US

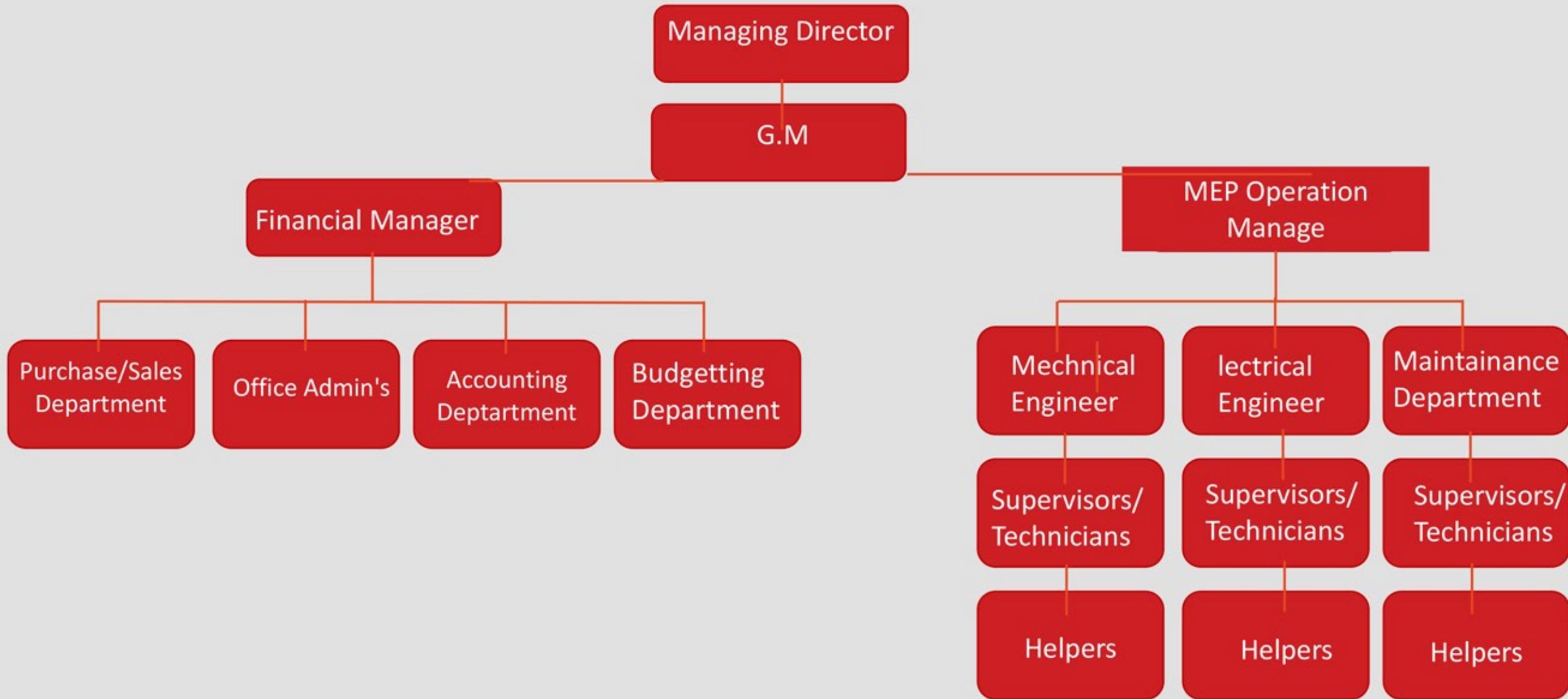


INTRODUCTION

High German Electrical and Mechanical Works Company with Grade-A status, HGP is quality business house in the UAE having wide business interest including Engineering Contracting activities in MEP Building Services, Operation & Maintenance of MEP Building Services, Facility Management, State-of-the-art assembly and testing facility for world renowned Technology. On demand Trading in various Engineering products and Systems with International Manufacturers such as Siemens, Bosch, Mitsubishi, O general, Cooling, Tyco, Ducab , Safeco, etc



ORGANIZATIONAL CHART



HISTORY

High German Electrical and Mechanical Works LLC had been there since 2007 HGP has its foundation in long years of experience in dealing with different kind of client environments and excellent MEP services knowledge. Today we have reached the point where we have started to tie loose knots in the market, with an open forum for growth and prosperity. During the past period of HGP history, HGP achieved excellence as MEP services provider in the UAE that delivers broad set of long term business relationship. Moreover, HGP has formed alliances with the best regional MEP products provider in the UAE to serve our clients wherever they are located.



Electrical



- ➤ Infrastructure services for Low Voltage
- ➤ Electrical Switchgear Panels (M.V and L.V), MDBs, SMDB and DBs.
- ➤ Indoor and Outdoor lightings
- ➤ Earthing & Lightning Protection Systems
- ➤ Power and Distribution transformers (H.V)
- ➤ Neutral Earthing Resistors for power transformers
- ➤ Cathodic Protection System
- ➤ Electrical Heat Tracing System
- ➤ Glanding and terminations
- ➤ Cable tray management system (GI, SS and FRVE)
- ➤ MCCs and starter panels
- ➤ Building Management System
- ➤ Fire Alarm System (Addressable or Conventional and Central Battery Emergency,
- ➤ Exit Light, Voice Evacuation system, Co Detection system & LPG System)
- ➤ Voice & Data Systems
- ➤ CCTV Installation and Commissioning
- ➤ MATV System
- ➤ Access Control System
- ➤ Conference System
- ➤ Sound System



Mechanical

• Heating, Ventilation, and Air Conditioning (Design, Implementation, Testing & Commissioning)

- Ducted Split Unit & VRF
- Chilled Water Systems
- Air Handling Units and Fan Coils
- Smoke & Heat Ventilation Systems

• *Fire Fighting System*

- Wet & Dry Sprinkler system
- Wet & Dry Riser system
- Deluge system for LPG Tanks.
- Foam system
- Pre-Action system
- Installation of required Pumps

Plumbing

- Water Supply Works
- Drainage Works
- All kinds of Compressed



SELECTED PROJECTS REFERENCES



MEP Works



1/Rahma BULDING 1+2 Abu Shagara /
Sharjah



2/Brighton College at Alain-Abudabi



3/Nasser Al Shamsi villas (22 Units)
Dubaimidriff

SELECTED PROJECTS REFERENCES



MEP Works



AREVA T & D Middle East FZE,
Sharjah
Testing / wiring for 132kV relay &
control panels

Schön Properties HQ in DIB / MEP
Works.

Gargash Insafoam / Emicool
ETS – Electrical Works Energy
transfer station at
DIP District Cooling energy Station
having 3 x
260 kilowatts pumps, VFDs Auto
Trans etc

MEP Works



Al Watan University - Ajman
MEP Works



Conrad Tower, Dubai/MEP Works



Mazaya Tower, Dubai/MEP Works

MEP Works



STS school - Umm Al Quwain / MEP Works



Al Medan Villas – Dubai / MEP Works



Modern Villas (120U nits), Dubai /MEP Works

MEP Works



(Alkahaleej Alarbi school & Mohammad alfateh & Khalid ibn Mohammad) MEP Works



Lakeside - MEP Works

MEP Works



AL Fadeelah Kindergarten
We are also still working on
this school)
MEP Works



Al Amani Kindergarten
We are also still working on this
school)
MEP Works



Al Hayat Kindergarten
We are also still working on
this school)
MEP Works

SELECTED PROJECTS REFERENCES

Maintenance Works



4/Old fish market - Abu Dhabi



5/Plume garden villas - Abu Dhabi



6/Sheik Mohammed bin saqer building - G+10 - sharja

Maintenance Works



7/ Dubai optical outlets - 13 branchu.
a.e



8/Al Fuhaidi building - G+12-
Dubai



9/ Hammer ain mall - Dubai

SELECTED PROJECTS REFERENCES



Maintenance Works



10/Rashid Said Loath villas (4 Units)
Dubai

Maintenance Works



H.G.P Electrical and Mechanical Works LLC have presence in all the 7 Emirates of the United Arab Emirates since year 2007.



Project Name: Etihad Tower
Location : Abu Dhabi
Description : G-I Duct installation with Thermal Insulation & accessories
Chilled water system: Electrical work.



Project Name: The Villa
Location : Dubai
Description : G-I Duct installation With Thermal Insulation & accessories



Project Name: JBF RAK
Location : Free zone, Ras Al Khaimah
Description : AMC & G-I Duct installation with Thermal Insulation & accessories

Maintenance Works



Project Name: Umm Ghafa School
Location : Umm Ghafa, Al Ain
Description : G-I Duct installation CHW & FF & PLUMBING WORK with Thermal Insulation & accessories



Project Name: Sun and Gate Distracted Tower
Location: Al-Reem Island, Abu Dhabi
Description : G-I Duct installation with Thermal Insulation & accessories



Project Name: Beach Tower
Location : Al-Reem Island, Abu Dhabi
Description : G-I Duct installation with Thermal Insulation & accessories

Maintenance Works



Extension & atomization of Emirate Refining Co
Siemens Automation System-
Installation &
Termination of Instrumentation sensors



Gulf Extrusion/Bin Ghalib
Installation, Testing Commissioning of
2x3500kVA (11kv/0.4kv) 2x2500kVA
transformers at Gulf Extrusion plant
extension



UES (Middle East) L.L.C.HQ
,Dubai
Office Facility Maintenance
Services.

Maintenance Works



Emicool (Emirate District Cooling LLC) Dubai EWANS Residences, Zone-2 & Zone-3 Dubai Investment Termination of BTU meters.



ABB Industries at Al Quoz Automatic Irrigation Control System & Misc. facilities upgrading works



Park Place Tower (56 stories) Cable Glanding & Termination Works.

Maintenance Works



AREVA T & D - Dubai, UAE
Modification works on 11kV
GIS switchgear,
install & wire, CTS Energy
meter, test plugs etc in



Emicool Dubai Investment Park
Rectification containment
blockage for
communication Fiber Optic
Cable - Dubai



Al Hatboro Specon
Cable Glanding & Termination
Works for HS103
Jumeirah Beach Residence - Hotel
at Dubai

Fit out Works



Drake & Scull Int. Offices - Dubai
Cable Glanding & Termination
Works/Electrical
Works for Zayed University Campus.



Dubai Metro Projects
Foundation Support Services

Fit out Works



The secret cuisine restaurant
Shop no 5 in Tower opal, level G, F
BUSINESS BAY – DUBAI. UAE
Full fit out work



MAG 318 Residential Tower in
BUSINESS BAY-DUBAI
MEP Works & fit out work



American University @ sharjah
ELECTRICAL WORK FOR CHILLER
FROM career

Fit out Works



Airport



Project Name: Airport prefabricated site establishments with albaddad capital
contractor total quantity 25 caravan full mep work

Airport

Fit out Works



Project name : Emirates place in abu Dhabi with albdadda capital contractor

Fit out Works





Cabana restaurant Dubai mall address hotel - Dubai. external and internal work

Fit out Works



Abu Dhabi school of government-abu Dhabi. Interiour work

Fit out Works



ALBADDAD CAPITAL LLC
Project: Red Sea 1323
Installation of Plumbing & electrical works for Toilet

Fit out Works



External and facades projects 1- Seniors' Happiness Centre - Dubai - al Mamzer - land Scap and hard Scap

CONTACT US



971 559908063



971 559908063



www.higpe.net



info@higpe.net



UAE - Ajman - AL-Nakhil 2 -Dewan Tower Block B



High German Power Elec



highgerman247



highgerman247



highgermanpower@hotmail.com